

FURUNO

FISH FINDER

FCV-627

Operator's Guide

English

The purpose of this guide is to provide the basic operation for this equipment. For more detailed information, see the Operator's Manual.

All brand and product names are trademarks, registered trademarks or service marks of their respective holders.

Alarm Icons

- : Arrival Alarm
- : Multiple alarms
- : Voltage alarm (High)
- : Voltage alarm (Low)
- : Speed alarm

Gain Setting

- G:0.0 - 10 (Auto Gain: Off)
- G:AF (Auto Gain: Fishing)
- G:AC (Auto Gain: Cruising)

Display Mode

Picture advance speed

Range Setting

- AUTO_R (Auto Range)
- MAN_R (Manual Range)

How to select a display mode

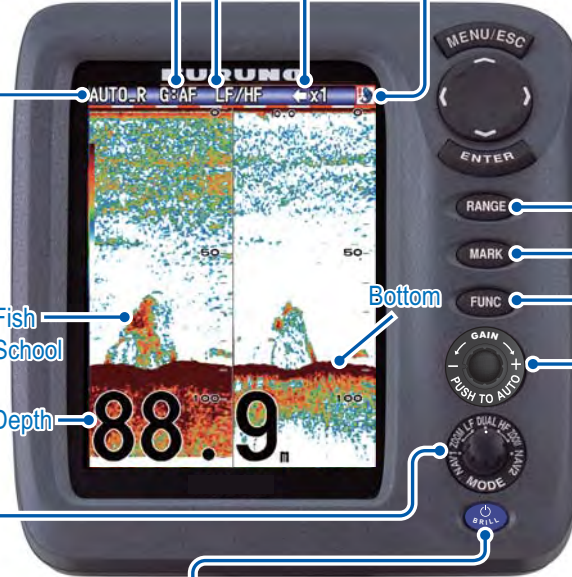


- From left,
- NAV1: Navigation 1
 - ZOOM: Low freq. zoom display mode (BL-LF, BZ-LF, MZ-LF)
 - LF: Low freq. single display mode (LF)
 - DUAL: Low/High freq. dual display mode (LF/HF)
 - HF: High freq. single display mode (HF)
 - ZOOM: High freq. zoom display mode (BL-HF, BZ-HF, MZ-HF)
 - NAV2: Navigation 2

Fish School

Bottom

Depth



How to choose a range

(NA: When bottom discrimination function is used)

RANGE → [Auto] → [ENTER] → Range will be changed automatically

RANGE → [Manual] → [ENTER] → Manually select a range

FUNCTION key

How to open the pre-set window

FUNC → Short press → Pic. Advance → [ENTER] → Adjust setting(s)

Default setting

How to register the item for instant display

FUNC → Long press → FUNC Key → [ENTER] → Choose item from list

How to adjust the brilliance

Short press (Long press: Turn off the power) → Brill → [ENTER] → Press ◀ or ▶ to adjust brilliance.

How to adjust the gain

Press the center button → Auto Gain → [Fishing] → [ENTER] → Gain is adjusted automatically

→ [Cruising] → [ENTER] → Gain is adjusted automatically

→ [Off] → [ENTER] → Adjust gain manually

How to display fish size

(Requires transducer that supports ACCU-FISH.)

How to open [ACCU-FISH] menu



Example of [ACCU-FISH] menu setting

- ACCU-FISH: On
- Fish Info: Fish Size
- Fish Symbols: Striped

102 → Fish Size/Depth
(Selectable with [Fish Info])
• Size of number can be changed with [Depth Size]

Fish Symbols (Selectable from 4 types)
• The mark size changes with fish size.

	Striped	Solid	Circle	Square
Large fish size (more than 50cm or more than 20 inches)				
Small fish size (10 to 49 cm, or 4 to 19 inches)				

How to register a waypoint

(Connection of navigational equipment is required.)



Use arrow keys to set the cross cursor where desired.

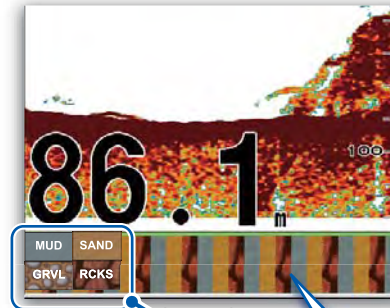
Bottom Discrimination

(Requires transducer that supports bottom discrimination.)

How to open [Bottom Disc.] menu



Graphic Display



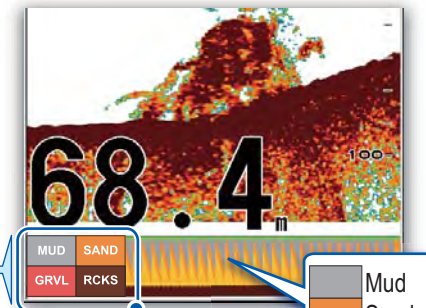
Legend
 Rocks Gravel Sand Mud

Example of [Bottom Disc.] menu setting

- Bottom Disc.: Graphic
- Legend: On

Displays the most probable bottom sediment.

Probability Display



Legend
 Mud
 Sand
 Gravel
 Rocks

Example of [Bottom Disc.] menu setting

- Bottom Disc.: Probability
- Legend: On

Displays bottom data in graph form.

Graph explanation

